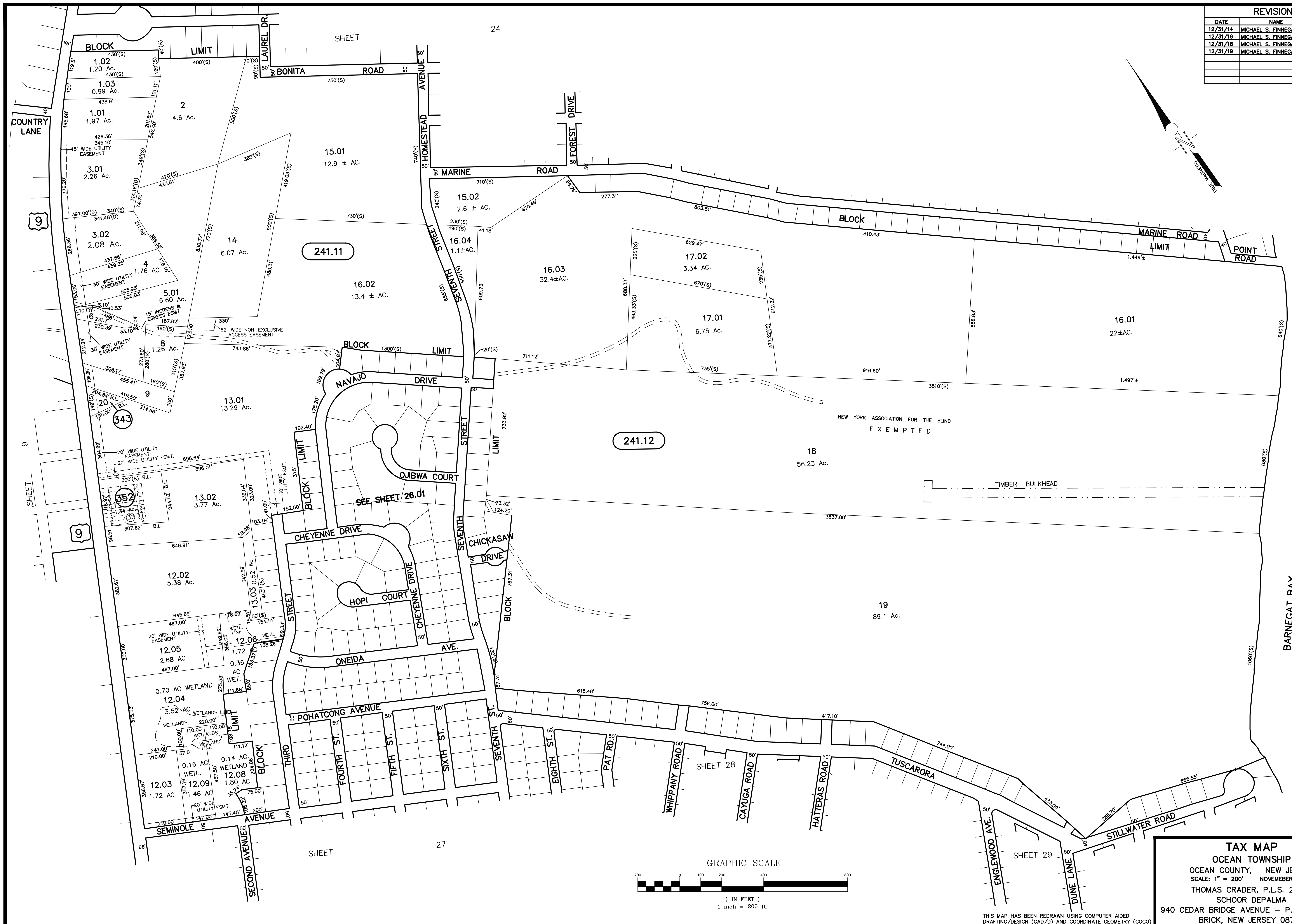
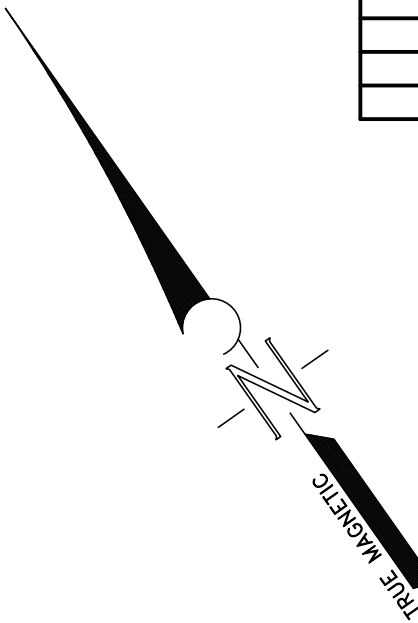


REVISIONS		
DATE	NAME	LIC. No.
12/31/14	MICHAEL S. FINNEGAN P.L.S.	GS34851
12/31/16	MICHAEL S. FINNEGAN P.L.S.	GS34851
12/31/18	MICHAEL S. FINNEGAN P.L.S.	GS34851
12/31/19	MICHAEL S. FINNEGAN P.L.S.	GS34851

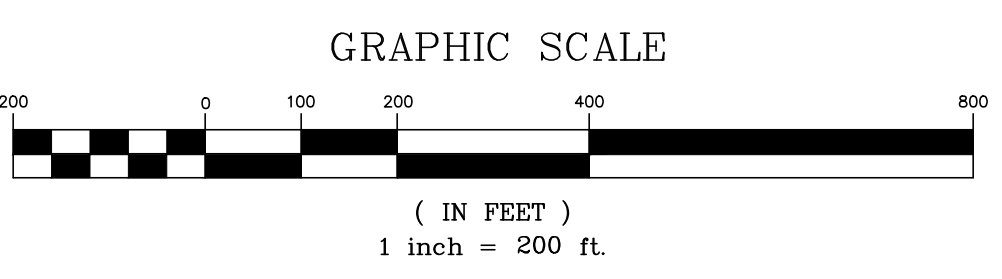


241.11

241.12

343

352



**TAX MAP**  
**OCEAN TOWNSHIP**  
 OCEAN COUNTY, NEW JERSEY  
 SCALE: 1" = 200' NOVEMBER, 2002  
 THOMAS CRADER, P.L.S. 21782  
 SCHOOR DEPALMA  
 940 CEDAR BRIDGE AVENUE - P.O. BOX 1429  
 BRICK, NEW JERSEY 08723

THIS MAP HAS BEEN REDRAWN USING COMPUTER AIDED DRAFTING/DESIGN (CAD/D) AND COORDINATE GEOMETRY (COGO).