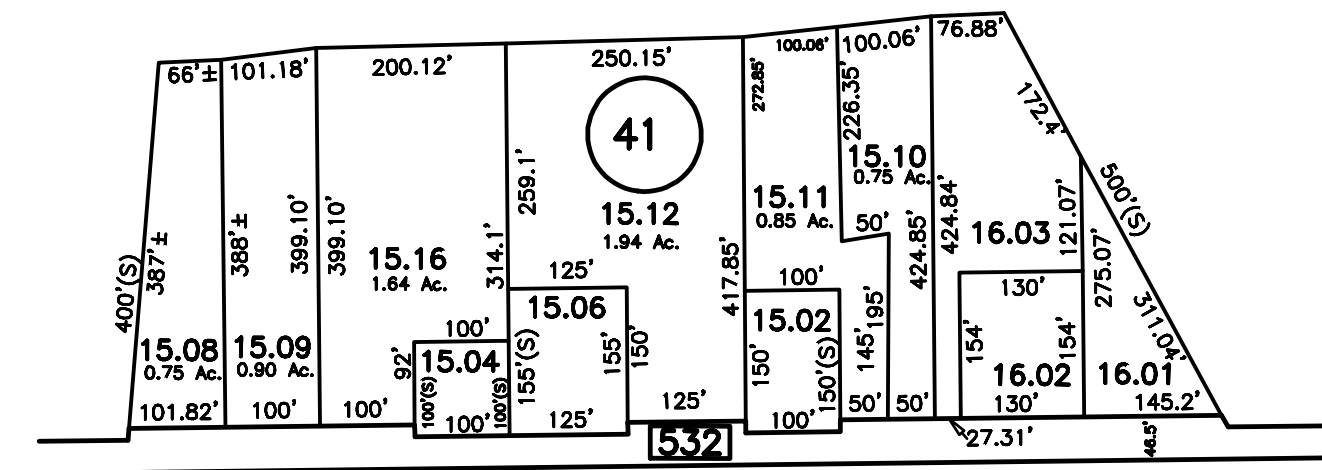
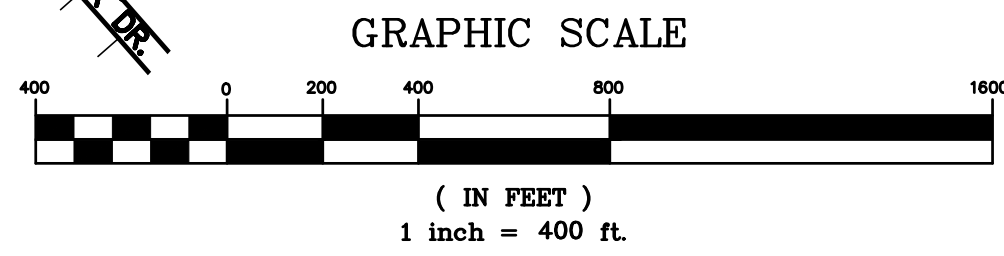
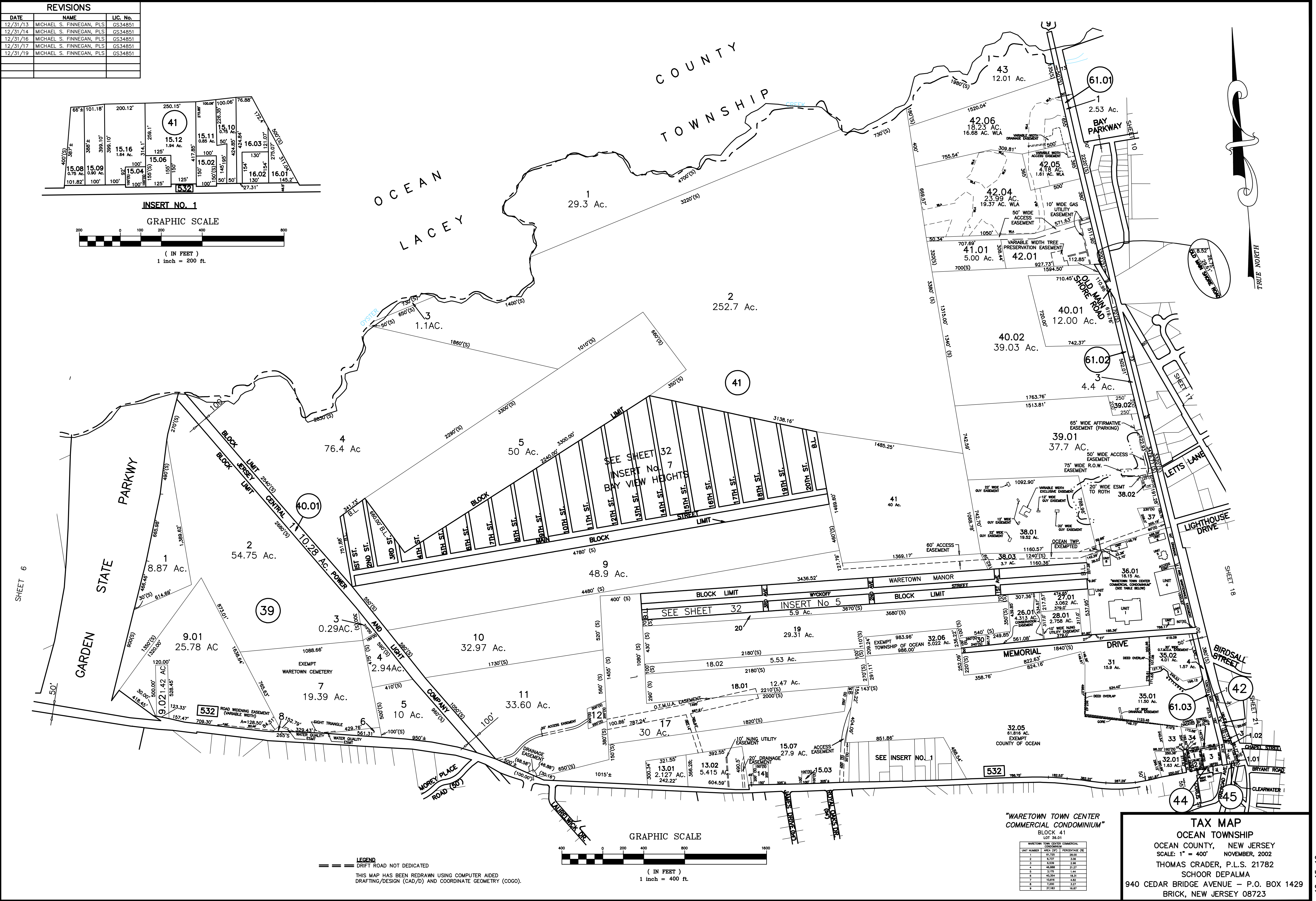
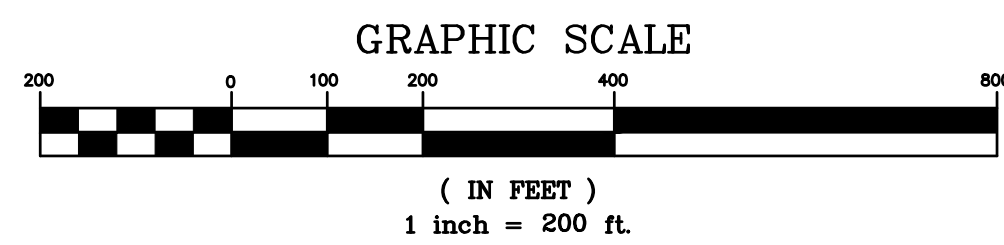


REVISIONS		
DATE	NAME	LIC. No.
12/31/13	MICHAEL S. FINNEGAN, PLS	GS34851
12/31/14	MICHAEL S. FINNEGAN, PLS	GS34851
12/31/16	MICHAEL S. FINNEGAN, PLS	GS34851
12/31/17	MICHAEL S. FINNEGAN, PLS	GS34851
12/31/19	MICHAEL S. FINNEGAN, PLS	GS34851



INSERT NO. 1



LEGEND  
--- DIRT ROAD NOT DEDICATED  
THIS MAP HAS BEEN REDRAWN USING COMPUTER AIDED DRAFTING/DESIGN (CAD/D) AND COORDINATE GEOMETRY (COCO).

"WARETOWN TOWN CENTER COMMERCIAL CONDOMINIUM"  
BLOCK 41  
LOT 36.01

UNIT NUMBER	AREA (SQ. FT.)	PERCENTAGE (%)
1	81,728	28.00
2	6,537	2.26
3	6,539	2.26
4	48,888	16.77
5	3,376	1.14
6	40,354	13.91
7	10,816	3.69
8	3,200	1.09
9	32,983	11.30

TAX MAP  
OCEAN TOWNSHIP  
OCEAN COUNTY, NEW JERSEY  
SCALE: 1" = 400'  
NOVEMBER, 2002  
THOMAS CRADER, P.L.S. 21782  
SCHOOR DEPALMA  
940 CEDAR BRIDGE AVENUE - P.O. BOX 1429  
BRICK, NEW JERSEY 08723