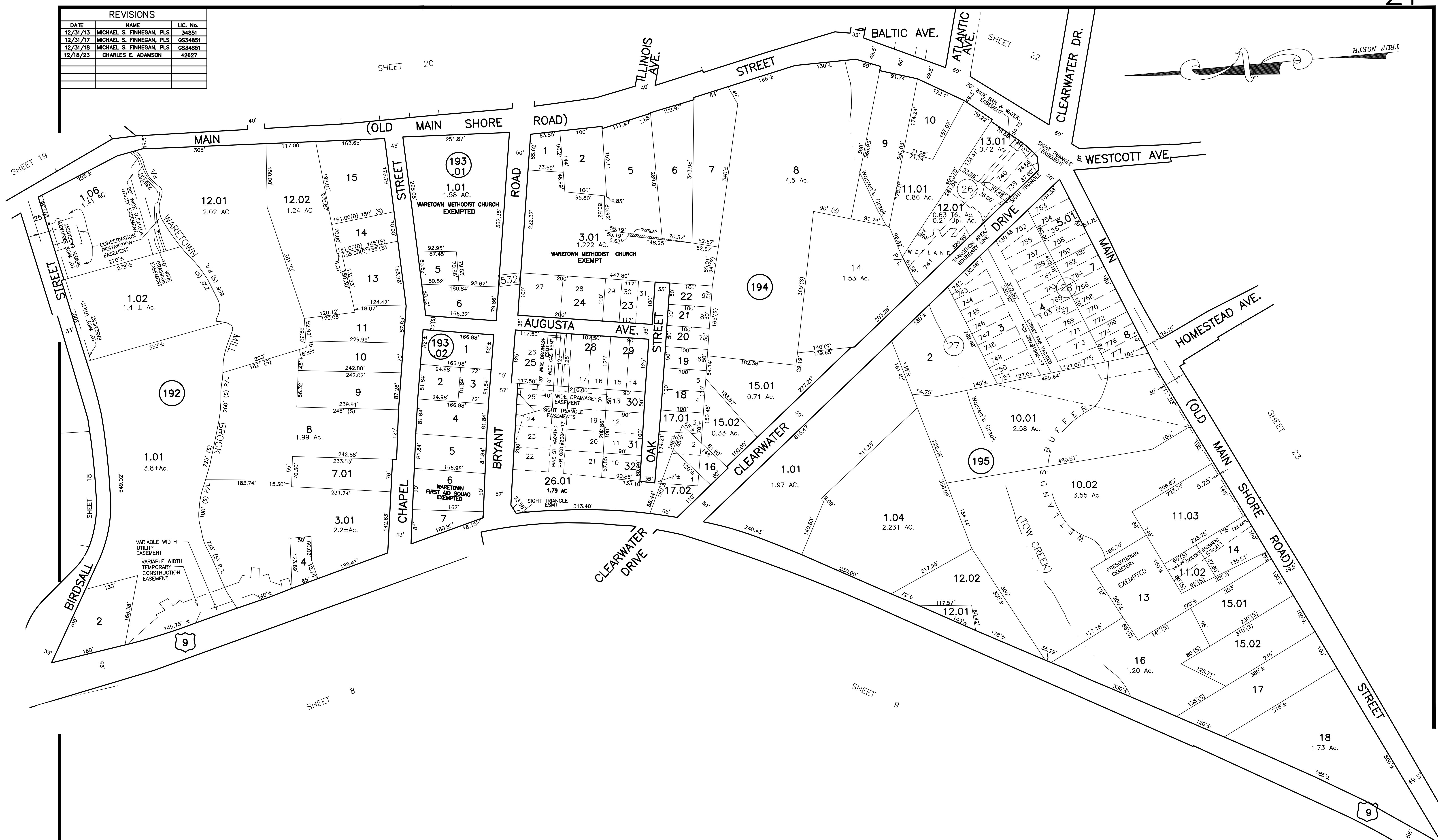
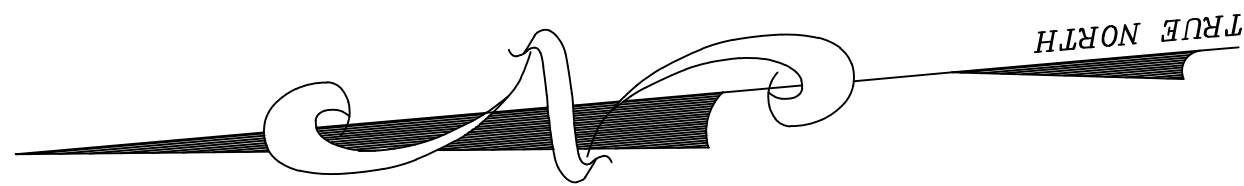


REVISIONS		
DATE	NAME	LIC. No.
12/31/13	MICHAEL S. FINNEGAN, PLS	34851
12/31/17	MICHAEL S. FINNEGAN, PLS	GS34851
12/31/18	MICHAEL S. FINNEGAN, PLS	GS34851
12/18/23	CHARLES E. ADAMSON	42627

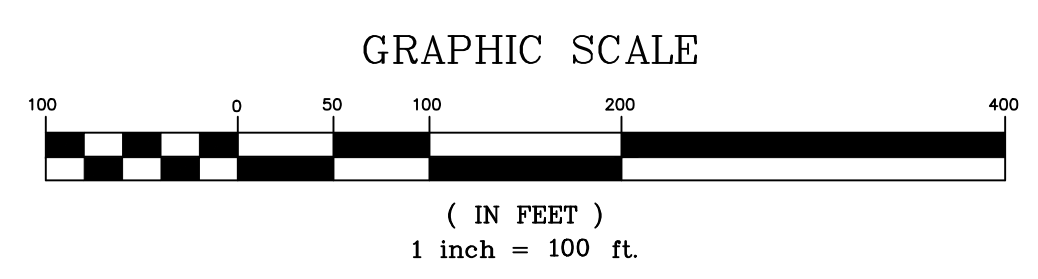
SHEET 20



SHEET 8

SHEET 9

SHEET 23



THIS MAP HAS BEEN REDRAWN USING COMPUTER AIDED DRAFTING/DESIGN (CAD/D) AND COORDINATE GEOMETRY (COGO).

TAX MAP
OCEAN TOWNSHIP
 OCEAN COUNTY, NEW JERSEY
 SCALE: 1" = 100' NOVEMBER, 2002
 THOMAS CRADER, P.L.S. 21782
 SCHOOR DEPALMA
 940 CEDAR BRIDGE AVENUE - P.O. BOX 1429
 BRICK, NEW JERSEY 08723