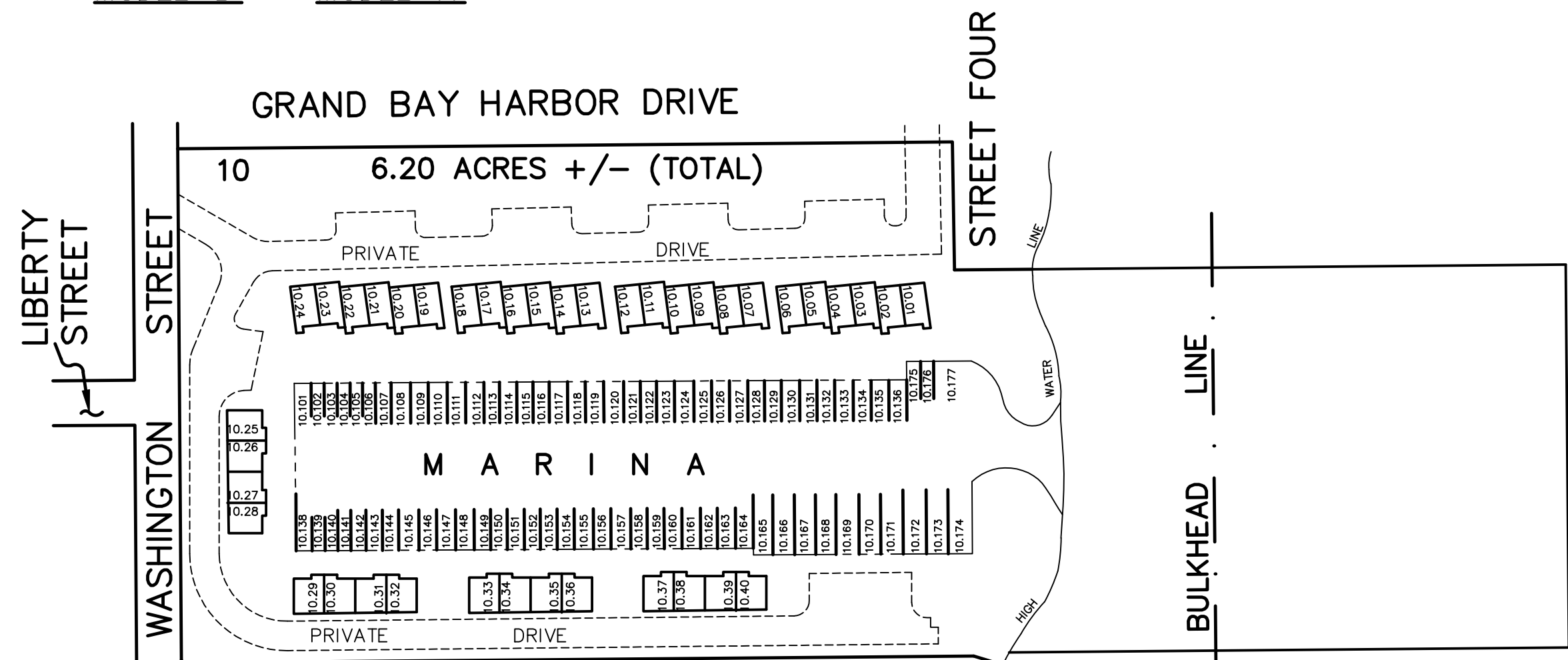
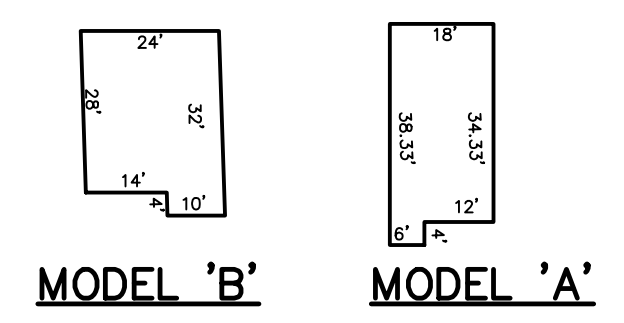
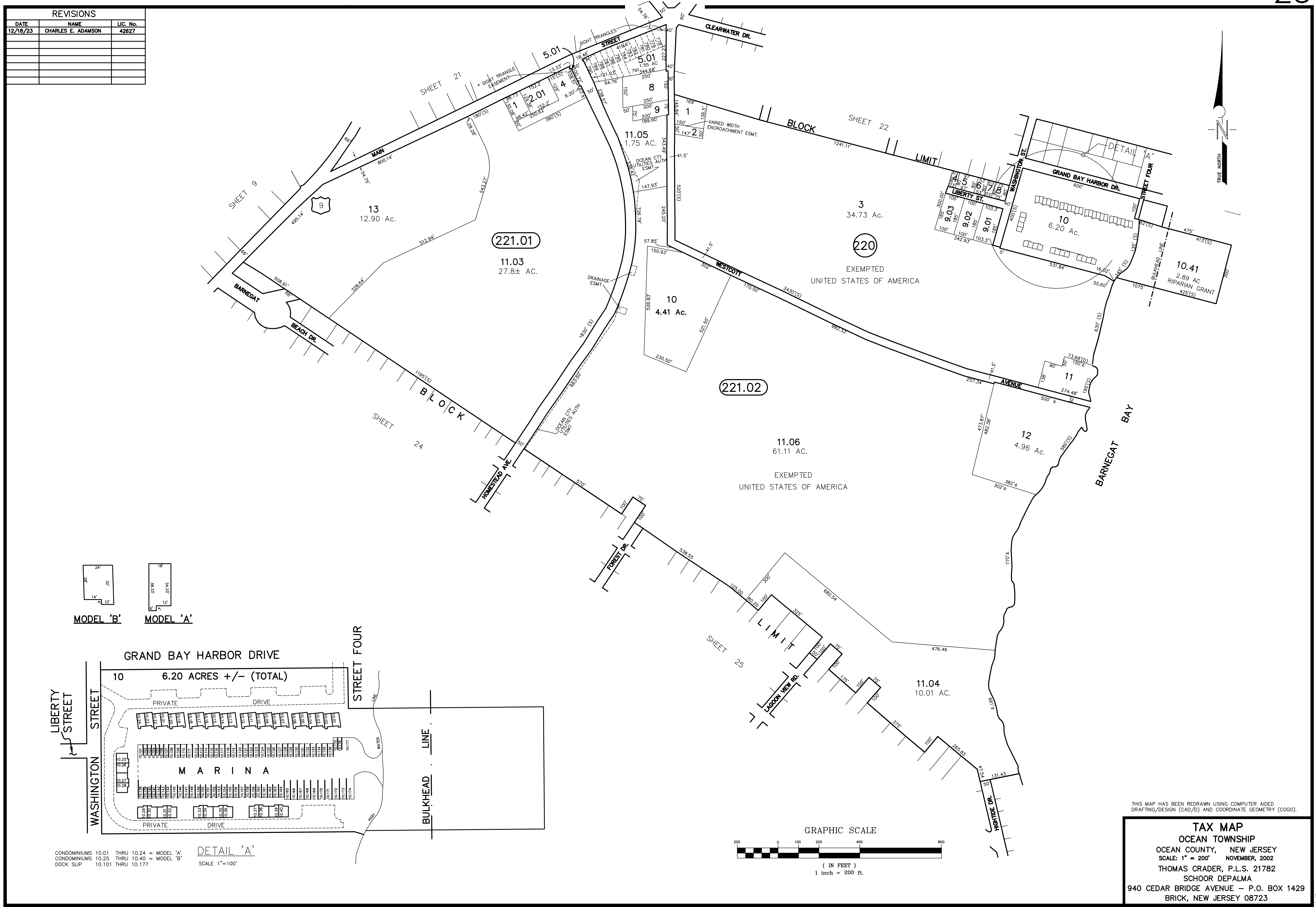
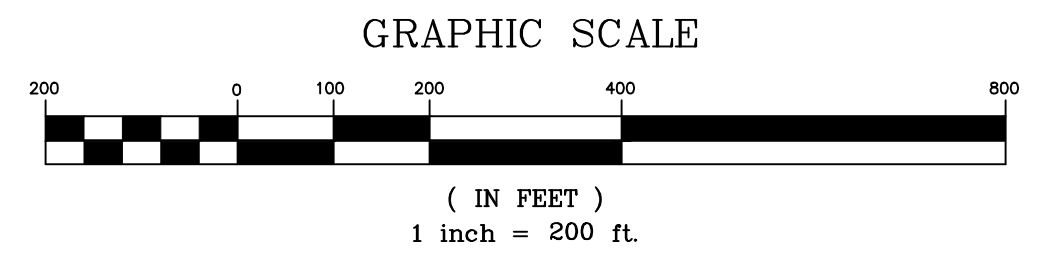


REVISIONS		
DATE	NAME	LIC. No.
12/18/23	CHARLES E. ADAMSON	42627



CONDOMINIUMS 10.01 THRU 10.24 = MODEL 'A'  
CONDOMINIUMS 10.25 THRU 10.40 = MODEL 'B'  
DOCK SLIP 10.101 THRU 10.177

DETAIL 'A'  
SCALE 1"=100'



THIS MAP HAS BEEN REDRAWN USING COMPUTER AIDED DRAFTING/DESIGN (CAD/D) AND COORDINATE GEOMETRY (COGO).

**TAX MAP**  
OCEAN TOWNSHIP  
OCEAN COUNTY, NEW JERSEY  
SCALE: 1" = 200' NOVEMBER, 2002  
THOMAS CRADER, P.L.S. 21782  
SCHOOR DEPALMA  
940 CEDAR BRIDGE AVENUE - P.O. BOX 1429  
BRICK, NEW JERSEY 08723