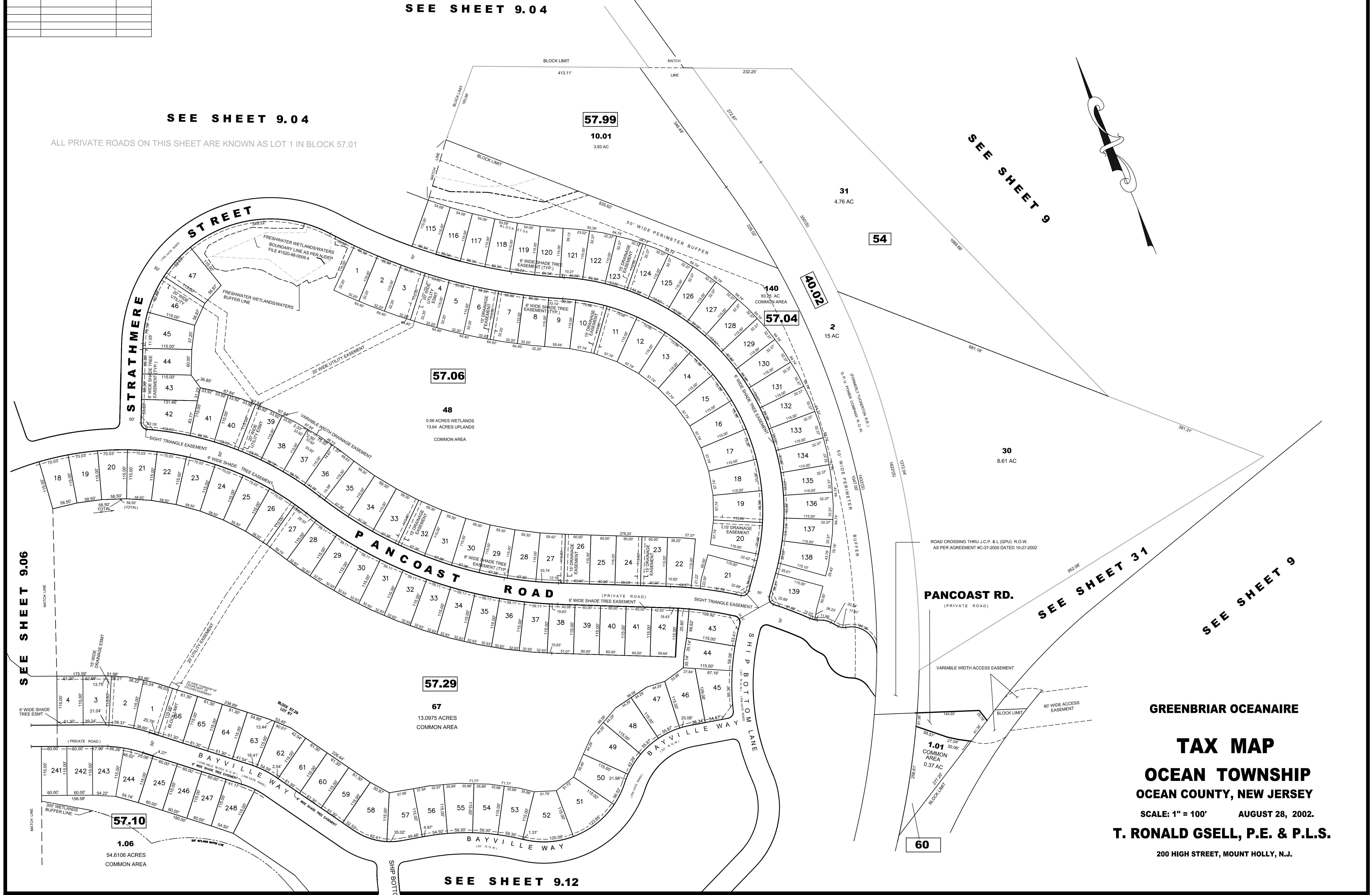


REVISIONS		
DATE	NAME	LIC. No.
12/31/2012	RICHARD A. MORALLE	GB 25863
12/31/2018	MICHAEL S. FINNEGAN, PLS	GS34851

THIS SHEET IS AN AUTOCAD COMPUTER GENERATED DRAWING. THIS WAS DONE UNDER THE SUPERVISION OF T. RONALD GSELL, P.E. & P.L.S. LICENSED LAND SURVEYOR N.J. LICENSE NO. 12812 DATED AUG. 28, 2002. THE APPROVED ORIGINAL IS ON FILE IN THE ENGINEER'S OFFICE.



SEE SHEET 9.04

ALL PRIVATE ROADS ON THIS SHEET ARE KNOWN AS LOT 1 IN BLOCK 57.01

SEE SHEET 9

SEE SHEET 31

SEE SHEET 9

SEE SHEET 9.06

SEE SHEET 9.12

**GREENBRIAR OCEAIRE**

**TAX MAP**

**OCEAN TOWNSHIP**

**OCEAN COUNTY, NEW JERSEY**

SCALE: 1" = 100'      AUGUST 28, 2002.

**T. RONALD GSELL, P.E. & P.L.S.**

200 HIGH STREET, MOUNT HOLLY, N.J.