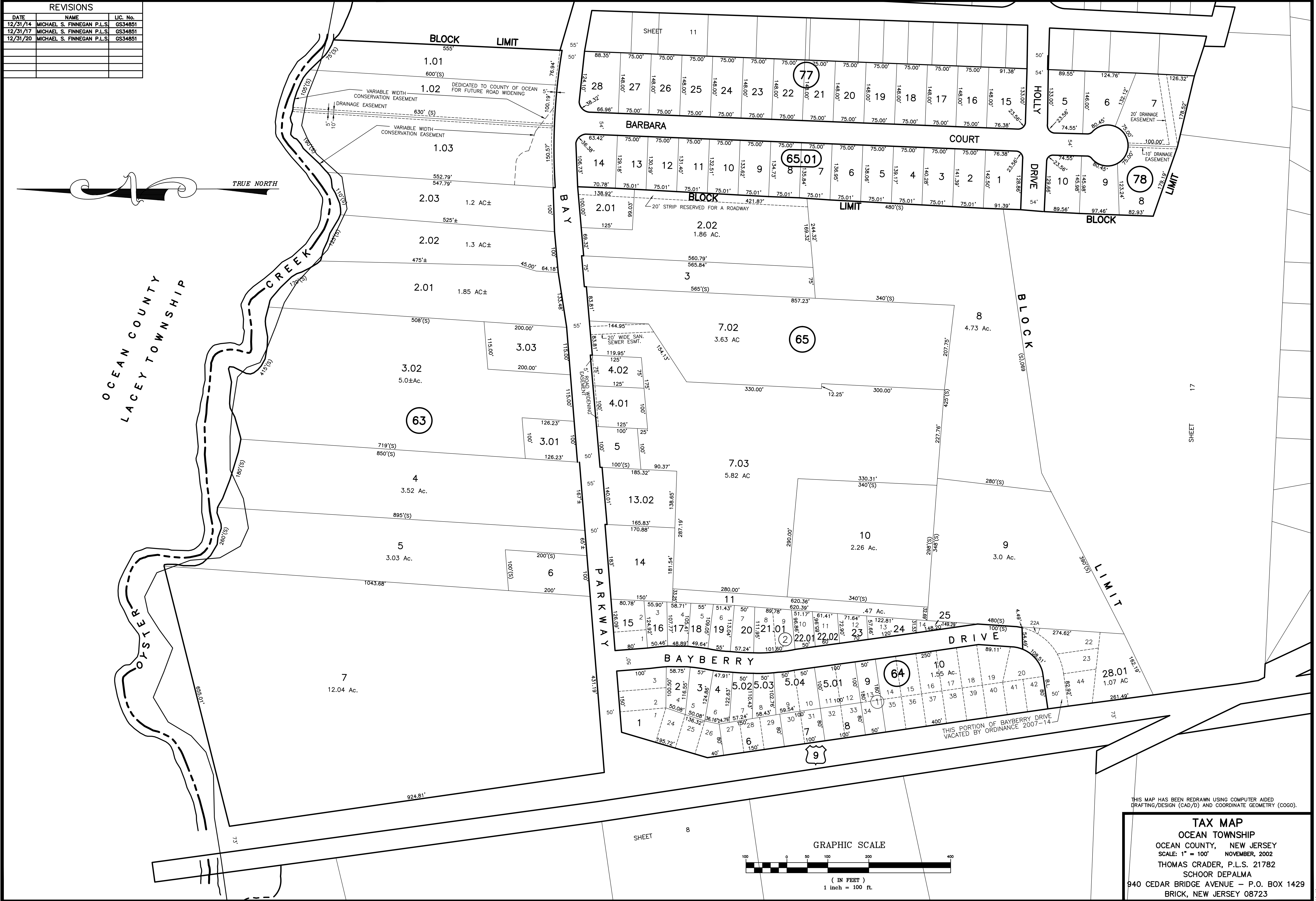


REVISIONS		
DATE	NAME	LIC. No.
12/31/14	MICHAEL S. FINNEGAN P.L.S.	GS34851
12/31/17	MICHAEL S. FINNEGAN P.L.S.	GS34851
12/31/20	MICHAEL S. FINNEGAN P.L.S.	GS34851



THIS MAP HAS BEEN REDRAWN USING COMPUTER AIDED DRAFTING/DESIGN (CAD/D) AND COORDINATE GEOMETRY (COGO).

**TAX MAP**  
 OCEAN COUNTY, NEW JERSEY  
 SCALE: 1" = 100' NOVEMBER, 2002  
 THOMAS CRADER, P.L.S. 21782  
 SCHOOR DEPALMA  
 940 CEDAR BRIDGE AVENUE - P.O. BOX 1429  
 BRICK, NEW JERSEY 08723

