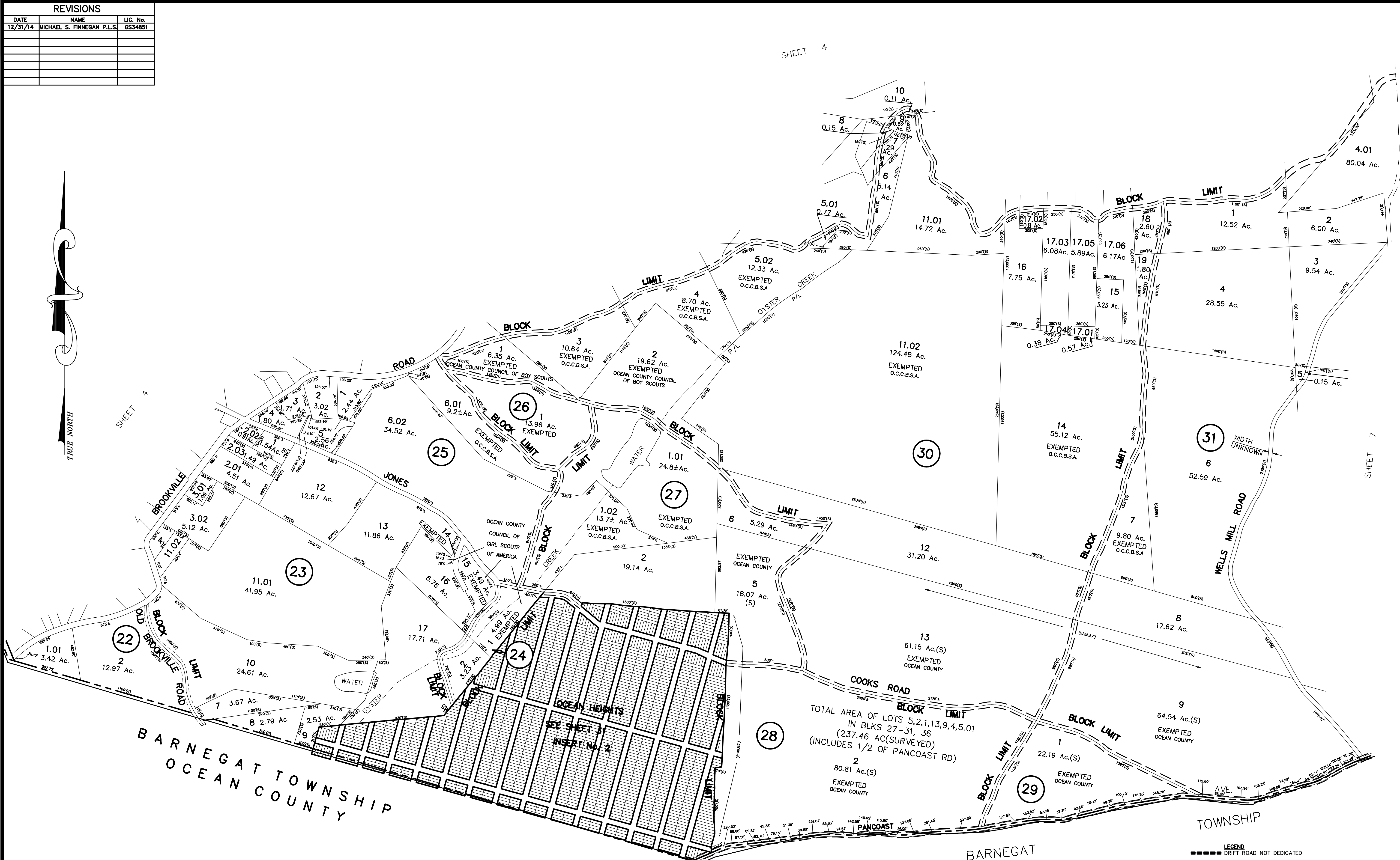
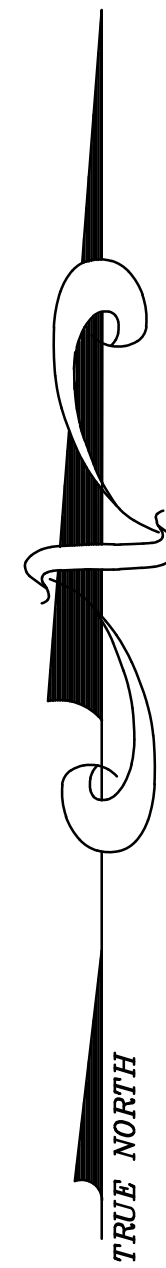
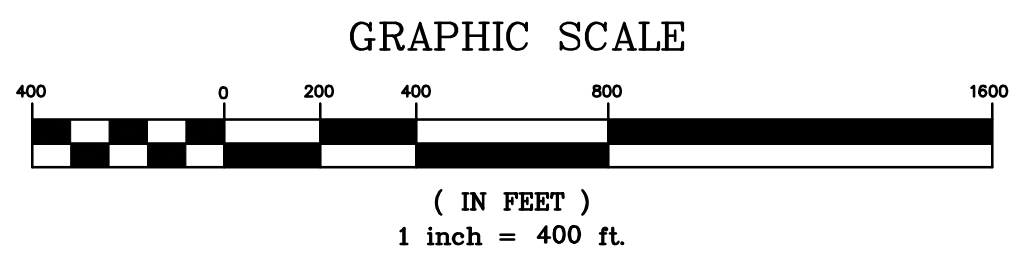


REVISIONS		
DATE	NAME	LIC. No.
12/31/14	MICHAEL S. FINNEGAN P.L.S.	GS34851



BARNEGAT TOWNSHIP
OCEAN COUNTY



LEGEND
--- DRIFT ROAD NOT DEDICATED
THIS MAP HAS BEEN REDRAWN USING COMPUTER AIDED DRAFTING/DESIGN (CAD/D) AND COORDINATE GEOMETRY (COGO).

TAX MAP
OCEAN TOWNSHIP
OCEAN COUNTY, NEW JERSEY
SCALE: 1" = 400' NOVEMBER, 2002
THOMAS CRADER, P.L.S. 21782
SCHOOR DEPALMA
940 CEDAR BRIDGE AVENUE - P.O. BOX 1429
BRICK, NEW JERSEY 08723